

Practical Examples

Accessing your mail folders from a PDA or Smartphone

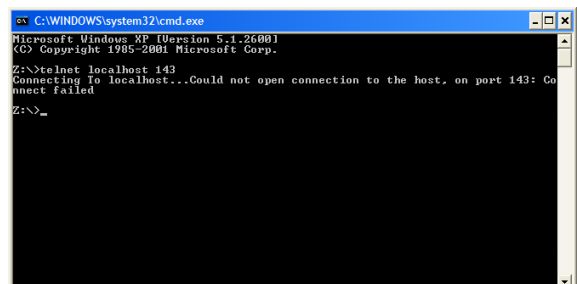
This document explains how to connect to Softalk Share Server using your PDA's IMAP client to view your emails.

It is assumed that the server software and client software have already been installed and that at least two users have been created.

Once you are using Softalk Share Server as your message store you can use your PDA to access your mail folders over the internet.

First of all you need to configure Softalk Share Server to accept incoming IMAP connections. As a pre-requisite to this, you should ensure that no other application, such as a mail server running on the same computer, is using port 143.

To do this click on "Start", "Run", type "cmd" and click OK. This will pop up a command window or "DOS box" as it is sometimes called.



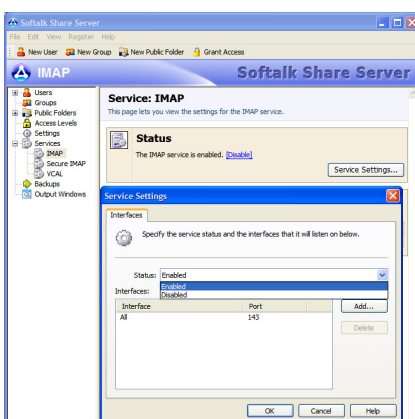
```
C:\WINDOWS\system32\cmd.exe
Microsoft Windows [Version 5.1.2600]
(C) Copyright 1985-2001 Microsoft Corp.

Z:\>telnet localhost 143
Connecting to localhost...Could not open connection to the host, on port 143: Co
nnect failed

Z:\>_
```

Type **telnet localhost 143**, as in the example above and press return. In this example you can see that the attempted connection failed. This means that nothing else is running on port 143 and you are ok to move on to the next step.

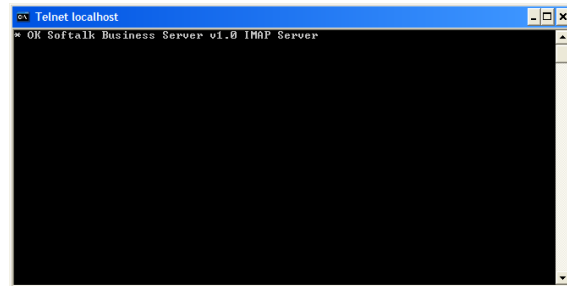
If you get any other sort of message or a blank screen you will need to find out what it is and turn it off. Most IMAP services will report what it is if you try connecting in this fashion.



Now, open the administrator, expand the Services section and click on the IMAP service. You will see the IMAP details appear on the right. Click on the "Service Settings..." button and the IMAP Service Settings dialog pops up. Ensure the status is set to Enabled and click OK.

Softalk Share Server

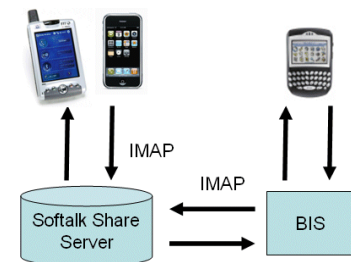
If you try the telnet connection test we did earlier you will get something like the image to the right.



Softalk Share Server is now configured for IMAP connections, but you should test the connection further, prior to continuing. You can do this using Outlook Express (or Windows Mail on Vista). Just create a new IMAP account using the Softalk Share Server credentials for server name, user login name and password. An SMTP server is required for sending emails. Once you have confirmed that you can see your mail in Outlook Express you can continue with the next step.

To allow incoming IMAP connections from outside your LAN, you will need to configure your office router to allow incoming connections on port 143 to be forwarded through to the Softalk Share Server host computer. You will need to consult your routers manual regarding this. Look under "Port forwarding", "NAT" or "Network Address Translation".

Your PDA needs an IMAP client which you will use to make the connection. Most PDAs have an IMAP client as part of the mail functionality. You must configure the IMAP client to connect to your routers external IP address on port 143. In order to send email, you will need access to an SMTP server, such as the one provided by your ISP.



Blackberry users who use a Blackberry Internet Server (BIS) can configure it to connect to Softtalk Share Server over the IMAP port. Emails in Softtalk Share Server will be imported by the BIS and then transferred to your Blackberry device.

You should now have access to email stored in Softalk Share Server from your PDA.